

Kineziološki fakultet, zbirni izveštaj, 2. semestar 2018.-2019.-engleski

No. of responses = 11

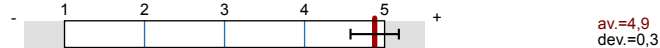


Overall indicators

Global Index



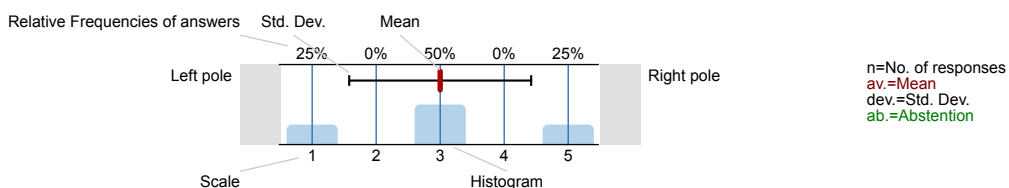
2. Questions on lectures and teaching quality



Survey Results

Legend

Question text

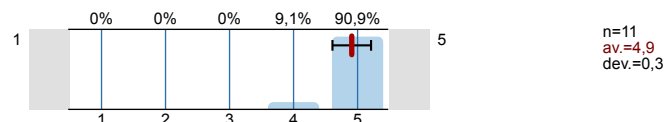


1. Questions about student

1.1) Sex:

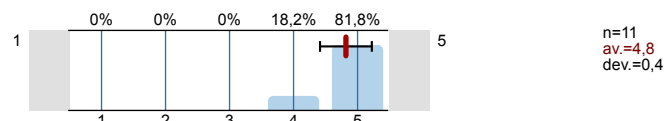


1.2) Make a self-assessment of capability of meeting the course requirements

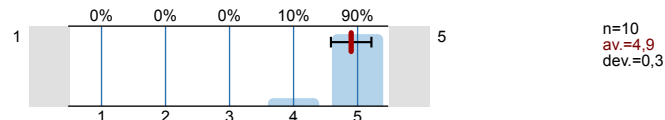


2. Questions on lectures and teaching quality

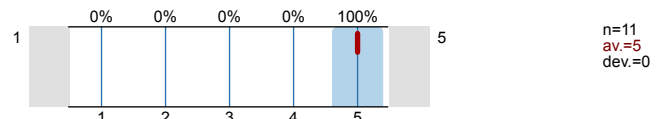
2.1) Teacher/associate has introduced the course contents and syllabus in a clear and understandable way.



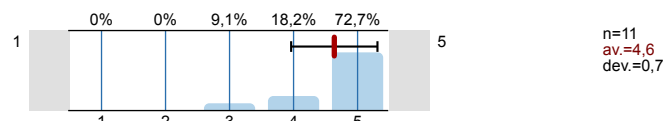
2.2) Teacher/associate has set clear methods and criteria for student assessment.

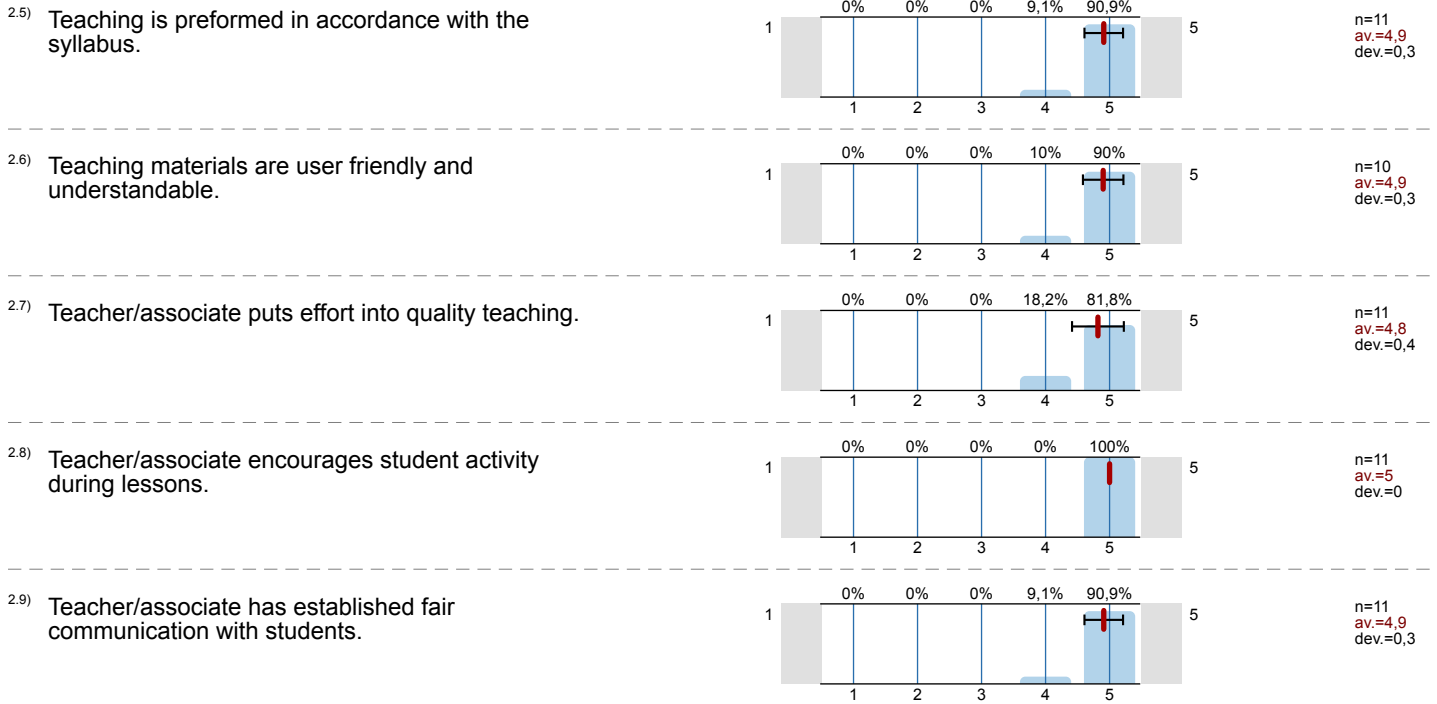


2.3) Lectures take place on time and regularly.



2.4) Teacher/associate presents the course contents in an understandable way.





Profile

█ **Compilation:** █ **Kineziološki fakultet, zbirni izveštaj, 2. semestar 2018.-2019.-engleski**

Values used in the profile line: Mean

1. Questions about student

1.2) Make a self-assessment of capability of meeting the course requirements		n=11 av.=4,9 md=5,0 dev.=0,3
--	--	------------------------------------

2. Questions on lectures and teaching quality

2.1) Teacher/associate has introduced the course contents and syllabus in a clear and understandable way.		n=11 av.=4,8 md=5,0 dev.=0,4
2.2) Teacher/associate has set clear methods and criteria for student assessment.		n=10 av.=4,9 md=5,0 dev.=0,3
2.3) Lectures take place on time and regularly.		n=11 av.=5,0 md=5,0 dev.=0,0
2.4) Teacher/associate presents the course contents in an understandable way.		n=11 av.=4,6 md=5,0 dev.=0,7
2.5) Teaching is preformed in accordance with the syllabus.		n=11 av.=4,9 md=5,0 dev.=0,3
2.6) Teaching materials are user friendly and understandable.		n=10 av.=4,9 md=5,0 dev.=0,3
2.7) Teacher/associate puts effort into quality teaching.		n=11 av.=4,8 md=5,0 dev.=0,4
2.8) Teacher/associate encourages student activity during lessons.		n=11 av.=5,0 md=5,0 dev.=0,0
2.9) Teacher/associate has established fair communication with students.		n=11 av.=4,9 md=5,0 dev.=0,3