

Kineziološki fakultet, zbirni izvještaj, 1. semestar 2018-2019-engleski

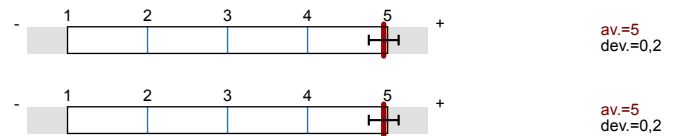
No. of responses = 28



Overall indicators

Global Index

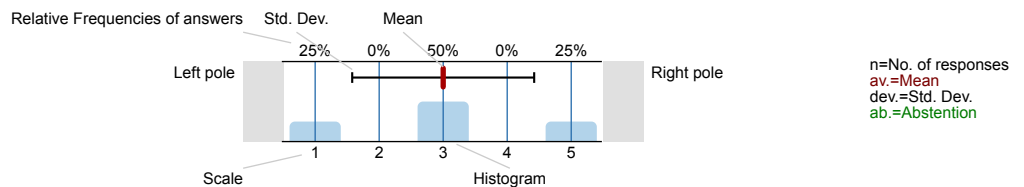
2. Questions on lectures and teaching quality



Survey Results

Legend

Question text

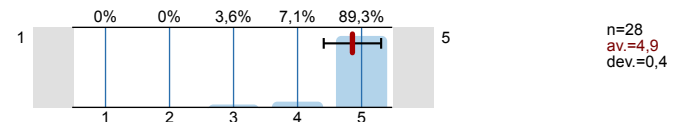


1. Questions about student

1.1) Sex:

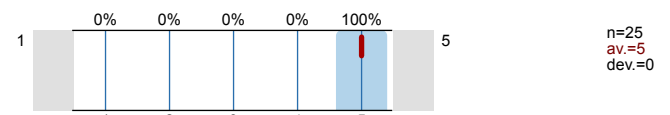


1.2) Make a self-assessment of capability of meeting the course requirements

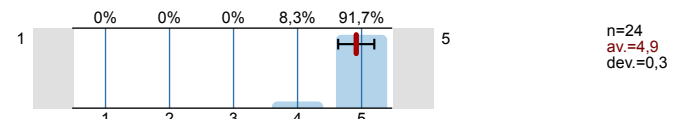


2. Questions on lectures and teaching quality

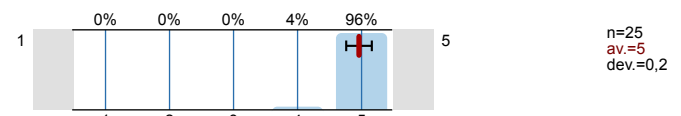
2.1) Teacher/associate has introduced the course contents and syllabus in a clear and understandable way.



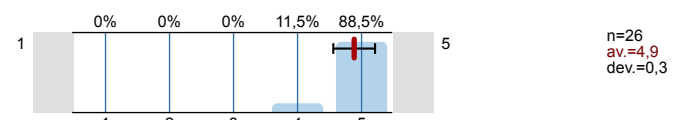
2.2) Teacher/associate has set clear methods and criteria for student assessment.



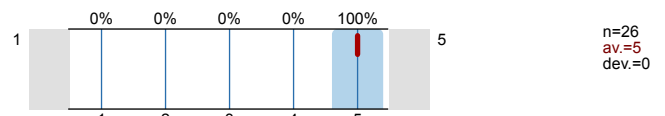
2.3) Lectures take place on time and regularly.



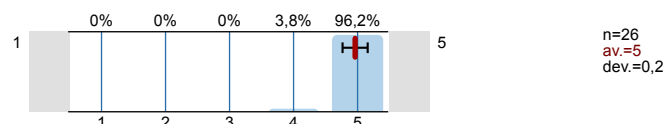
2.4) Teacher/associate presents the course contents in an understandable way.



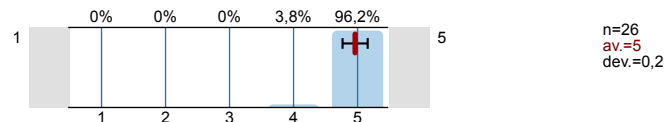
2.5) Teaching is preformed in accordance with the syllabus.



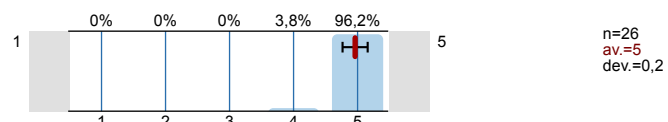
2.6) Teaching materials are user friendly and understandable.



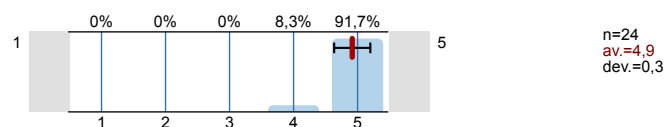
2.7) Teacher/associate puts effort into quality teaching.



2.8) Teacher/associate encourages student activity during lessons.



2.9) Teacher/associate has established fair communication with students.



Profile



Compilation: Kineziološki fakultet, zbirni izveštaj, 1. semestar 2018-2019-ingleski

Values used in the profile line: Mean

1. Questions about student

- 1.2) Make a self-assessment of capability of meeting the course requirements



n=28 av.=4,9 md=5,0 dev.=0,4

2. Questions on lectures and teaching quality

- 2.1) Teacher/associate has introduced the course contents and syllabus in a clear and understandable way.



n=25 av.=5,0 md=5,0 dev.=0,0

- 2.2) Teacher/associate has set clear methods and criteria for student assessment.



n=24 av.=4,9 md=5,0 dev.=0,3

- 2.3) Lectures take place on time and regularly.



n=25 av.=5,0 md=5,0 dev.=0,2

- 2.4) Teacher/associate presents the course contents in an understandable way.



n=26 av.=4,9 md=5,0 dev.=0,3

- 2.5) Teaching is performed in accordance with the syllabus.



n=26 av.=5,0 md=5,0 dev.=0,0

- 2.6) Teaching materials are user friendly and understandable.



n=26 av.=5,0 md=5,0 dev.=0,2

- 2.7) Teacher/associate puts effort into quality teaching.



n=26 av.=5,0 md=5,0 dev.=0,2

- 2.8) Teacher/associate encourages student activity during lessons.



n=26 av.=5,0 md=5,0 dev.=0,2

- 2.9) Teacher/associate has established fair communication with students.



n=24 av.=4,9 md=5,0 dev.=0,3