

Kineziološki fakultet, zbirni izvještaj, 1. semestar 2014-2015

No. of responses = 2585



Overall indicators

Global Index

av.=4,5
dev.=1

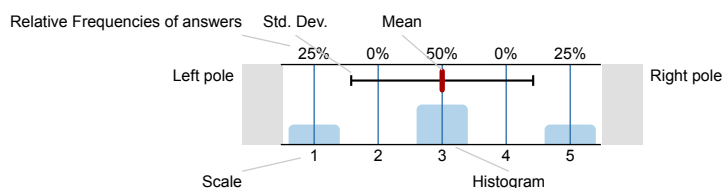
2. Pitanja o kvaliteti nastave i nastavnog rada

av.=4,5
dev.=1

Survey Results

Legend

Question text

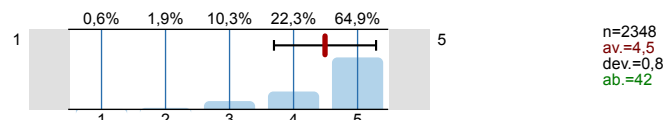
n=No. of responses
av.=Mean
dev.=Std. Dev.
ab.=Abstention

1. Pitanja o studentu

1.1) Spol:

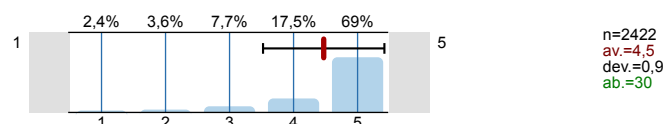


1.2) Ocjenite vlastitu sposobnost da zadovoljite zahtjeve ovog kolegija

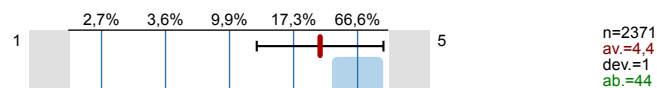


2. Pitanja o kvaliteti nastave i nastavnog rada

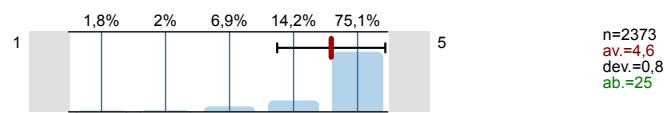
2.1) Nastavnik/suradnik na jasan i razumljiv način upoznao Vas je sa sadržajem i izvedbenim planom predmeta.



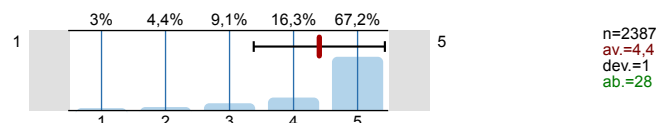
2.2) Nastavnik/suradnik je jasno utvrdio načine i kriterijevanjanja studenata.



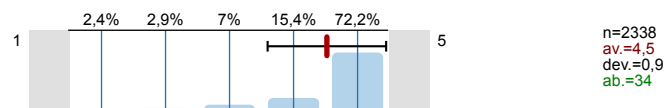
2.3) Nastava se održava na vrijeme i redovito.



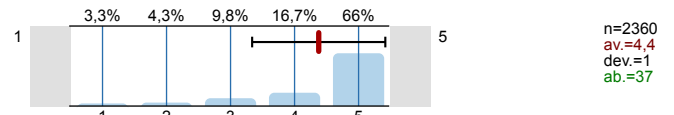
2.4) Nastavnik/suradnik razumljivo izlaže nastavne sadržaje.



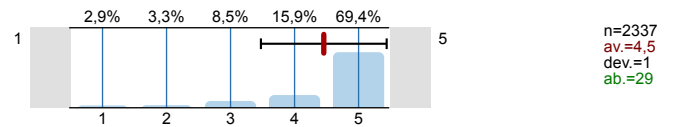
2.5) Nastava se izvodi u skladu s izvedbenim planom.



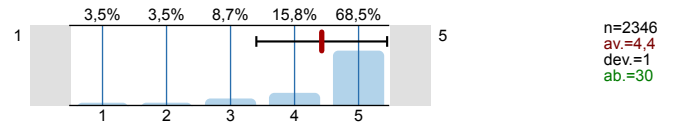
2.6) Nastavni materijali su primjereni i razumljivi.



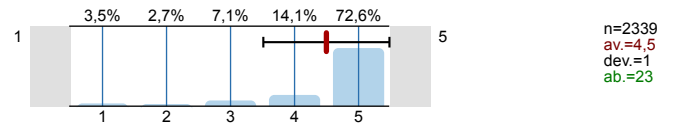
2.7) Nastavnik/suradnik se zalaže što kvalitetnije izložiti nastavno gradivo.



2.8) Nastavnik/suradnik potiče studente na aktivnost tijekom nastave.



2.9) Nastavnik/suradnik je korektan u komunikaciji sa studentima.




Profile







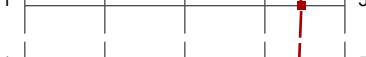
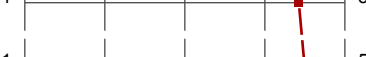

Compilation: Kineziološki fakultet, zbirni izvještaj, 1. semestar 2014-2015

Values used in the profile line: Mean

1. Pitanja o studentu

1.2) Ocjenite vlastitu sposobnost da zadovoljite zahtjeve ovog kolegija  n=2348 av.=4,5 md=5,0 dev.=0,8

2. Pitanja o kvaliteti nastave i nastavnog rada

2.1) Nastavnik/suradnik na jasan i razumljiv način upoznao Vas je sa sadržajem i izvedbenim planom predmeta.		n=2422 av.=4,5 md=5,0 dev.=0,9
2.2) Nastavnik/suradnik je jasno utvrdio načine i kriterije ocjenjivanja studenata.		n=2371 av.=4,4 md=5,0 dev.=1,0
2.3) Nastava se održava na vrijeme i redovito.		n=2373 av.=4,6 md=5,0 dev.=0,8
2.4) Nastavnik/suradnik razumljivo izlaže nastavne sadržaje.		n=2387 av.=4,4 md=5,0 dev.=1,0
2.5) Nastava se izvodi u skladu s izvedbenim planom.		n=2338 av.=4,5 md=5,0 dev.=0,9
2.6) Nastavni materijali su primjereni i razumljivi.		n=2360 av.=4,4 md=5,0 dev.=1,0
2.7) Nastavnik/suradnik se zalaže što kvalitetnije izložiti nastavno gradivo.		n=2337 av.=4,5 md=5,0 dev.=1,0
2.8) Nastavnik/suradnik potiče studente na aktivnost tijekom nastave.		n=2346 av.=4,4 md=5,0 dev.=1,0
2.9) Nastavnik/suradnik je korektan u komunikaciji sa studentima.		n=2339 av.=4,5 md=5,0 dev.=1,0

Profile


Compilation: Kineziološki fakultet, zbirni izvještaj, 1. semestar 2014-2015

Comparative line:
Compilation: Sveučilište u Splitu, zbirni izvještaj, 1. semestar 2014./2015.

Values used in the profile line: Mean





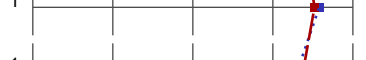
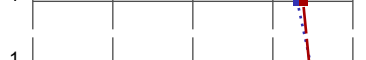



1. Pitanja o studentu

1.2) Ocjenite vlastitu sposobnost da zadovoljite zahtjeve ovog kolegija



n=2348 av.=4,5 md=5,0 dev.=0,8
n=58321 av.=4,3 md=5,0 dev.=0,9

2. Pitanja o kvaliteti nastave i nastavnog rada

2.1) Nastavnik/suradnik na jasan i razumljiv način upoznao Vas je sa sadržajem i izvedbenim planom predmeta.	1		5	n=2422 av.=4,5 md=5,0 dev.=0,9 n=63511 av.=4,5 md=5,0 dev.=0,9
2.2) Nastavnik/suradnik je jasno utvrdio načine i kriterije ocjenjivanja studenata.	1		5	n=2371 av.=4,4 md=5,0 dev.=1,0 n=62905 av.=4,5 md=5,0 dev.=0,9
2.3) Nastava se održava na vrijeme i redovito.	1		5	n=2373 av.=4,6 md=5,0 dev.=0,8 n=62961 av.=4,6 md=5,0 dev.=0,8
2.4) Nastavnik/suradnik razumljivo izlaže nastavne sadržaje.	1		5	n=2387 av.=4,4 md=5,0 dev.=1,0 n=62740 av.=4,4 md=5,0 dev.=1,0
2.5) Nastava se izvodi u skladu s izvedbenim planom.	1		5	n=2338 av.=4,5 md=5,0 dev.=0,9 n=61855 av.=4,6 md=5,0 dev.=0,8
2.6) Nastavni materijali su primjereni i razumljivi.	1		5	n=2360 av.=4,4 md=5,0 dev.=1,0 n=62221 av.=4,3 md=5,0 dev.=1,1
2.7) Nastavnik/suradnik se zalaže što kvalitetnije izložiti nastavno gradivo.	1		5	n=2337 av.=4,5 md=5,0 dev.=1,0 n=62129 av.=4,5 md=5,0 dev.=0,9
2.8) Nastavnik/suradnik potiče studente na aktivnost tijekom nastave.	1		5	n=2346 av.=4,4 md=5,0 dev.=1,0 n=61944 av.=4,4 md=5,0 dev.=1,0
2.9) Nastavnik/suradnik je korektan u komunikaciji sa studentima.	1		5	n=2339 av.=4,5 md=5,0 dev.=1,0 n=61702 av.=4,6 md=5,0 dev.=0,9